

## Brs3 Polyclonal Antibody

### Purified Rabbit Polyclonal Antibody (Pab)

Catalog # AP58089

### Specification

### Brs3 Polyclonal Antibody - Product Information

Application	WB, IHC-P, IHC-F, IF, ICC, E
Primary Accession	<a href="#">P32247</a>
Reactivity	Rat, Pig, Bovine
Host	Rabbit
Clonality	Polyclonal
Calculated MW	44 KDa
Physical State	Liquid
Immunogen	KLH conjugated synthetic peptide derived from human Brs3/Bombesin Receptor 3 8-110/399
Epitope Specificity	IgG
Isotype	
<b>Purity</b>	
affinity purified by Protein A	
Buffer	0.01M TBS (pH7.4) with 1% BSA, 0.02% Proclin300 and 50% Glycerol.
SUBCELLULAR LOCATION	Cell membrane; Multi-pass membrane protein.
SIMILARITY	Belongs to the G-protein coupled receptor 1 family.
SUBUNIT	Interacts with C6orf89.
Important Note	This product as supplied is intended for research use only, not for use in human, therapeutic or diagnostic applications.

### Background Descriptions

Bombesin Receptor 3 expression has been reported in lung (normal and cancer), nasal mucosa, placenta, and uterus. ESTs have been isolated from normal brain and kidney cancer libraries. It has a role in sperm cell division, maturation, or function. This receptor mediates its action by association with G proteins that activate a phosphatidylinositol-calcium second messenger system.

### Brs3 Polyclonal Antibody - Additional Information

**Gene ID** 680

#### Other Names

Bombesin receptor subtype-3, BRS-3, BRS3

#### Target/Specificity

] In germ cells in testis. Lung carcinoma cells.

#### Dilution

<span class = "dilution\_WB">WB~1:1000</span><br \><span class = "dilution\_IHC-P">IHC-P~N/A</span><br \><span class

=<span class="dilution\_IHC-F">IHC-F~~N/A</span><br \><span class="dilution\_IF">IF~~1:50~200</span><br \><span class="dilution\_ICC">ICC~~N/A</span><br \><span class="dilution\_E">E~~N/A</span>

**Format**

0.01M TBS(pH7.4), 0.09% (W/V) sodium azide and 50% Glyce

**Storage**

Store at -20 °C for one year. Avoid repeated freeze/thaw cycles. When reconstituted in sterile pH 7.4 0.01M PBS or diluent of antibody the antibody is stable for at least two weeks at 2-4 °C.

**Brs3 Polyclonal Antibody - Protein Information****Name** BR3**Function**

Role in sperm cell division, maturation, or function. This receptor mediates its action by association with G proteins that activate a phosphatidylinositol-calcium second messenger system.

**Cellular Location**

Cell membrane; Multi-pass membrane protein.

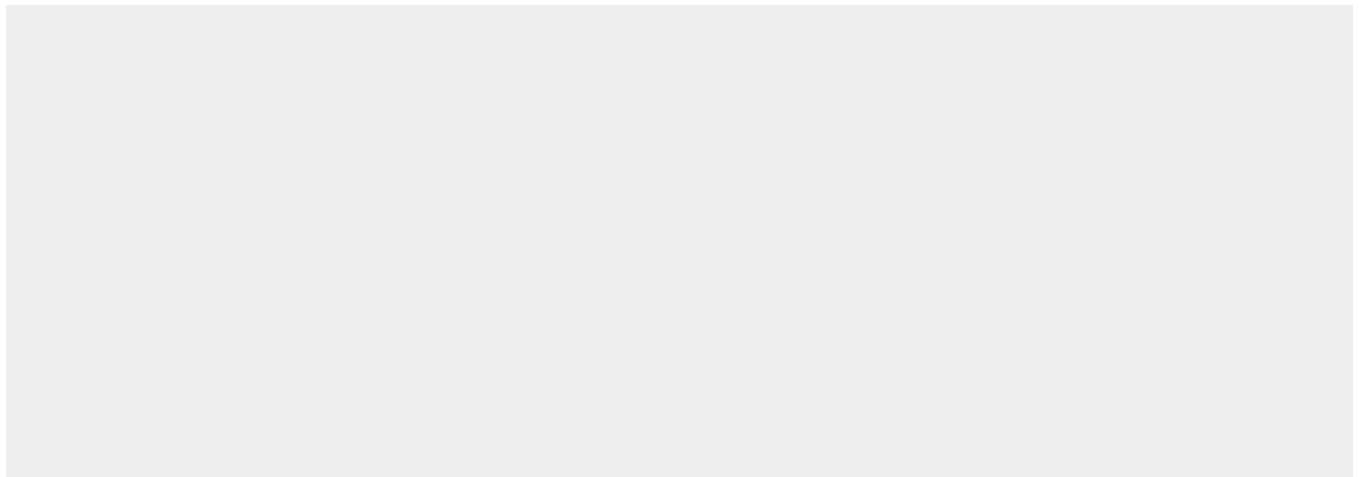
**Tissue Location**

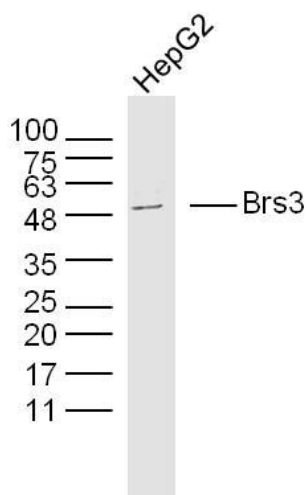
In germ cells in testis. Lung carcinoma cells.

**Brs3 Polyclonal Antibody - Protocols**

Provided below are standard protocols that you may find useful for product applications.

- [Western Blot](#)
- [Blocking Peptides](#)
- [Dot Blot](#)
- [Immunohistochemistry](#)
- [Immunofluorescence](#)
- [Immunoprecipitation](#)
- [Flow Cytometry](#)
- [Cell Culture](#)

**Brs3 Polyclonal Antibody - Images**



**Sample:**

HepG2 Cell (Human) Lysate at 30 ug

Primary: Anti- Brs3 (bs-3668R) at 1/300 dilution

Secondary: IRDye800CW Goat Anti-Rabbit IgG at 1/20000 dilution

Predicted band size: 44 kD

Observed band size: 44 kD